



NTSC U/C

PlayStation™



KIDS TO ADULTS



AGES 6+

SLUS-00008
00008

namco

WARNING: READ BEFORE USING YOUR PLAYSTATION GAME CONSOLE.

A very small percentage of individuals may experience epileptic seizures when exposed to certain light patterns or flashing lights. Exposure to certain patterns or backgrounds on a television screen or while playing video games, including games played on PlayStation game console, may induce an epileptic seizure in these individuals. Certain conditions may induce previously undetected epileptic symptoms even in persons who have no history of prior seizures or epilepsy. If you, or anyone in your family, has an epileptic condition, consult your physician prior to playing. If you experience any of the following symptoms while playing a video game – dizziness, altered vision, eye or muscle twitches, loss of awareness, disorientation, any involuntary movement, or convulsions – IMMEDIATELY discontinue use and consult your physician before resuming play.

WARNING TO OWNERS OF PROJECTION TELEVISIONS:

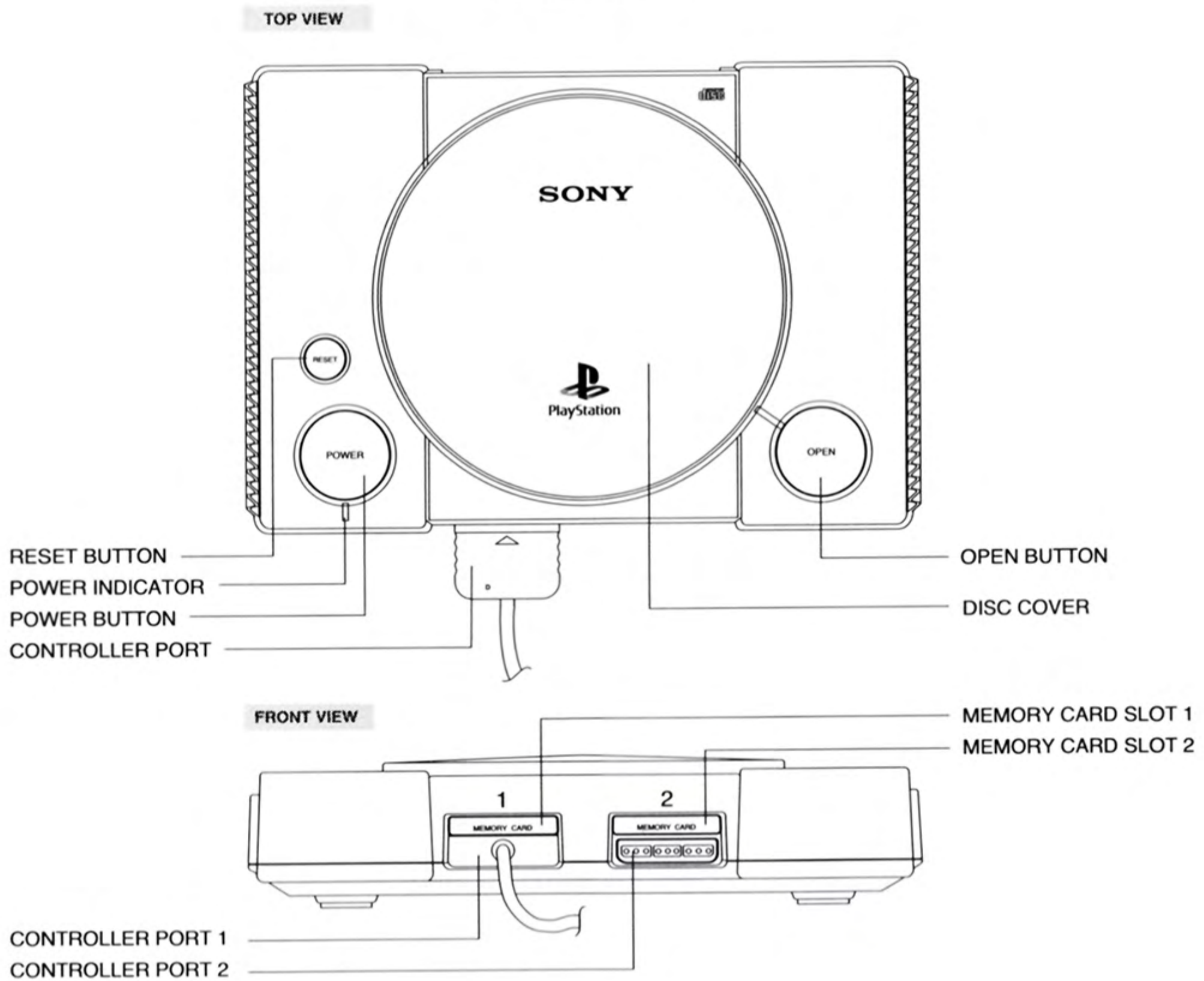
Still pictures or images may cause permanent picture-tube damage or mark the phosphor of the CRT, avoid repeated or extended use of video games on large-screen projection televisions. Refer to your projection TV instruction manual for more details.

HANDLING YOUR PLAYSTATION DISC:

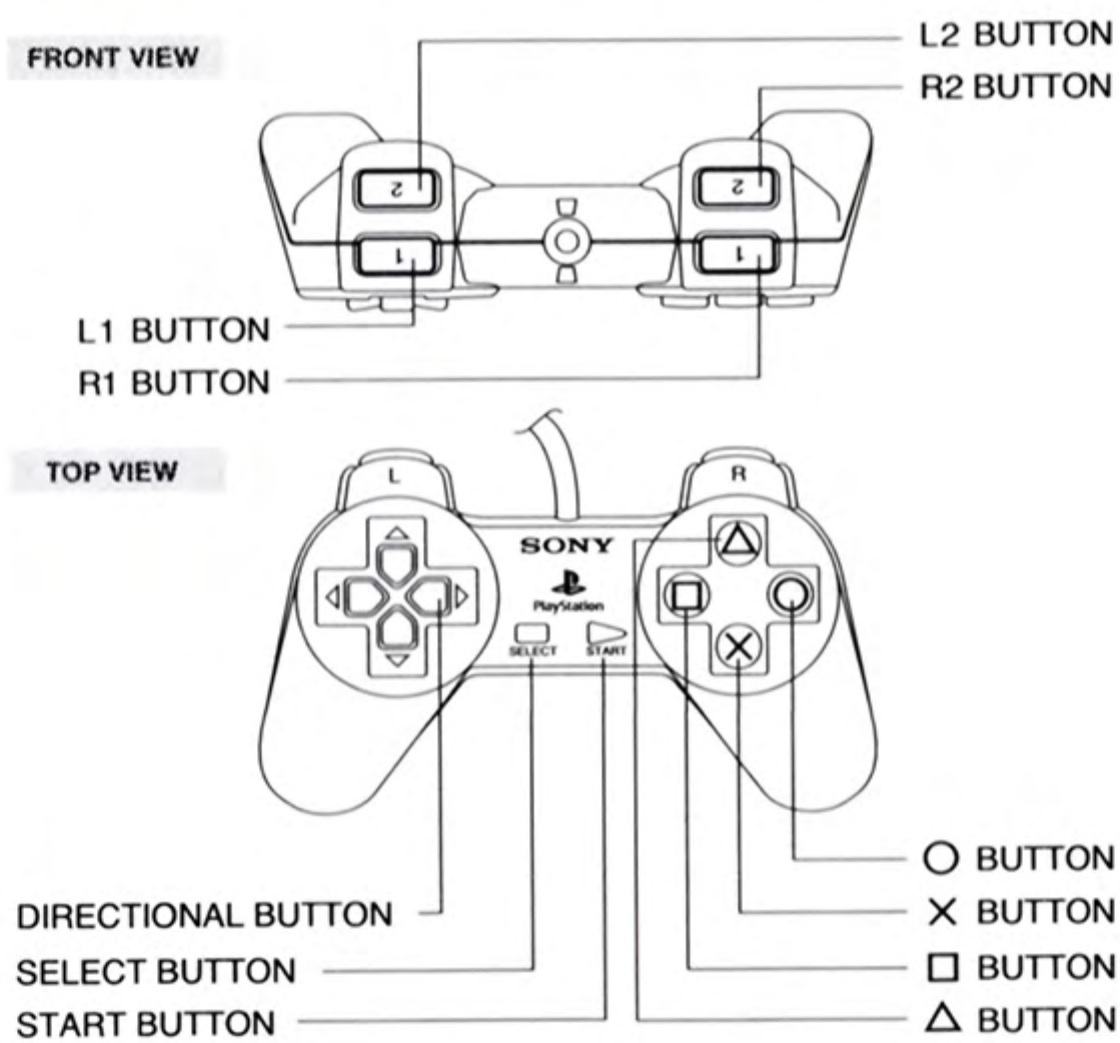
- This compact disc is intended for use only with PlayStation game console.
- Do not bend it, crush it or submerge it in liquids
- Do not leave it in direct sunlight or near a radiator or other source of heat.
- Be sure to take an occasional rest break during extended play.
- Keep this compact disc clean. Always hold the disc by the edges and keep it in its protective case when not in use. Clean the disc with a lint-free, soft, dry cloth, wiping in straight lines from center to outer edge. Never use solvents or abrasive cleaners.

Set up your PlayStation game console according to the instructions in its Instruction Manual. Make sure PlayStation power is off before inserting or removing a compact disc. Insert the Cybersled disc and close the CD door. Insert game controllers and turn on PlayStation. Follow on-screen instructions to start a game.

Console



Controller



CONTENTS

| | |
|--------------------------------|----------|
| Story | 2 |
| Starting the Game | 3 |
| Basic Operation | 4 |
| How to Play | 5 |
| Vehicle Selection | 6 |
| Power Ups | 7 |

CYBER SLED



Which warrior will take the title of “Cybersled Champion” by overcoming all challengers?

STORY

It is the year 2067. Huge cities have been built with the stench of progress and decay. A violent fighting game grows with unprecedented popularity. The Tank Duels are cold-hearted death matches that whip audiences into a frenzy of much needed enthusiasm and excitement. All contestants strive for the same goal... to win the tournament and collect its massive prize.

STARTING THE GAME

TITLE SCREEN

Choose the mode you want to go in from the Title Screen menu. There are three choices in the menu: 1P play, 2P play, and option. Move the cursor with the up and down direction keys to make your menu selection. Press start to choose.

1P Play. You play against the computer.

2P Play. Two players go against each other.



OPTION SCREEN

Option. This mode is for changing various game settings. After choosing Option on the Title screen make your menu selections with the up and down direction keys. You can change settings with any button.



1P Play difficulty. Sets the game level of difficulty in 1P play mode. You can choose from two levels, Normal and Expert. Choose the one suitable to your own playing level.

Game Graphic. You can play in the original arcade graphics style, or you can play with more realistic PlayStation detail.

Time limit. Select to leave the time limit off or on.

Player skill. Sets handicap during 2P play. You can choose from three settings, Normal, Expert, and Excellent.

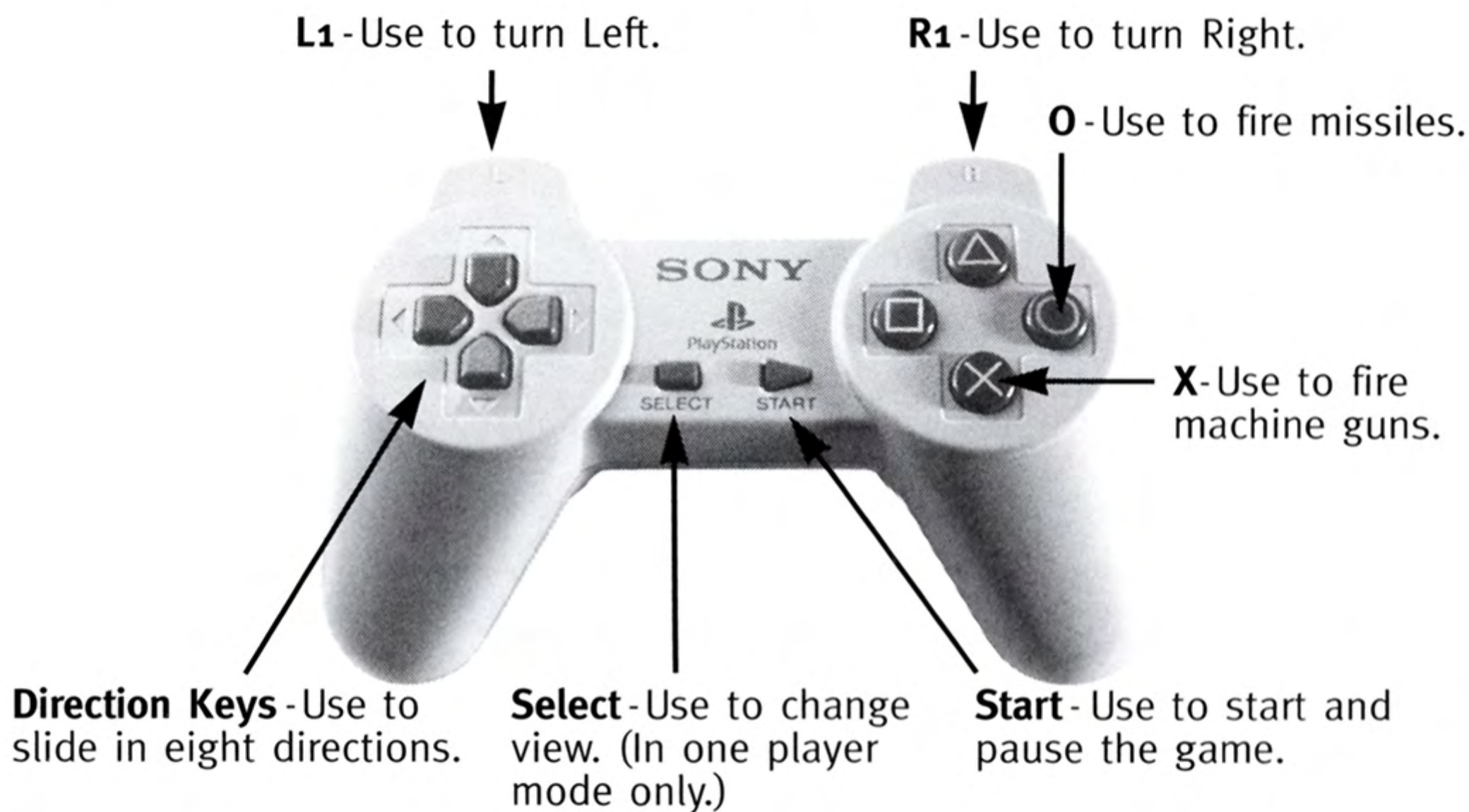
Key configurations. Changes the settings of the buttons.

Sound output. You can choose stereo or mono.

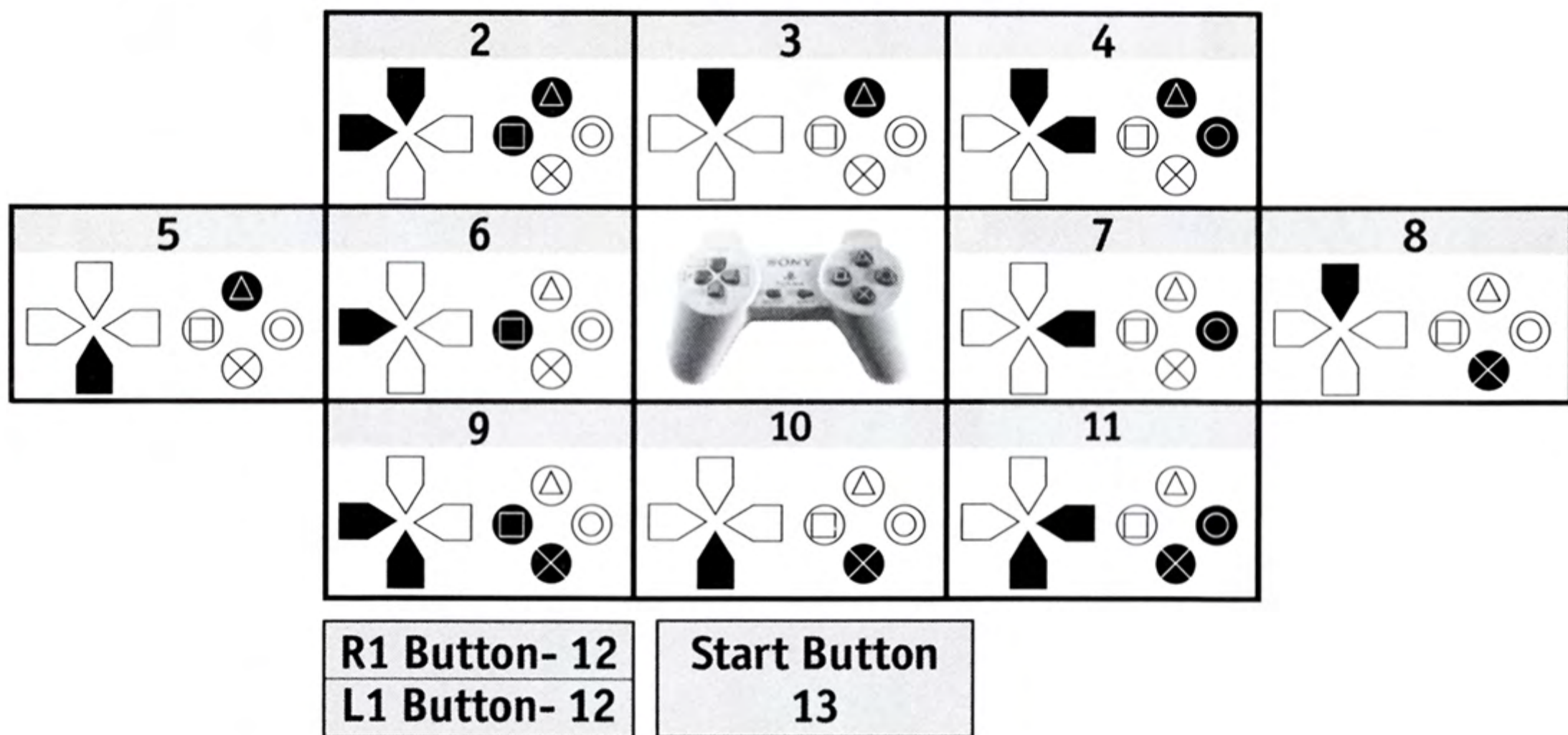
BASIC OPERATION

There are two ways the controller can be configured. You can change the configuration in the options menu.

Standard Configuration (Type 1)



Special Configuration (Type 2)



- 2. Go forward diagonally left.
- 3. Go forward.
- 4. Go forward diagonally right.
- 5. Left turn.
- 6. Left.
- 7. Right.
- 8. Right turn.
- 9. Go backward diagonally left.
- 10. Go backward.
- 11. Go backward diagonally right.
- 12. R1 button: missiles.
L1 button: machine-guns.
- 13. Start button: start or pause the game. Select button: change point of view (during 1-person play only).

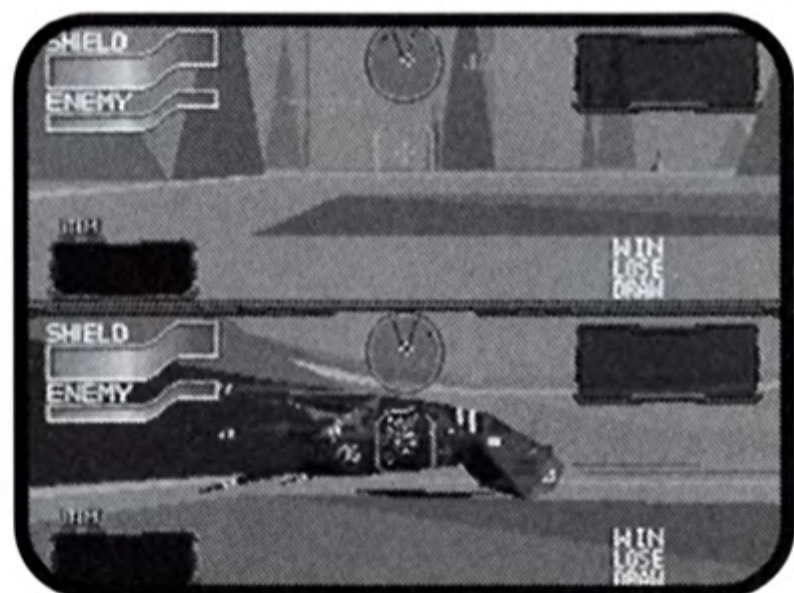
HOW TO PLAY

1P Play. This is for one player against the computer. If you destroy the enemy tank, it counts as a win and you progress to the next stage. If your own vehicle is destroyed, the game ends. If the time limit is on, the win will be awarded to the Tank whose shield strength is the highest when the time runs out.



Select a sled by moving the direction Key.
Then Press any button to choose a tank.

2P Play. Two players compete head to head. The top of the screen is the first person's display and the bottom is the second person's display. When you destroy an enemy you get one point. If the time limit is on, the person whose vehicle has the greatest remaining shield strength will get a point when the time runs out. The one who gets two points first will be the winner.



In addition to selecting sleds, you have the option of selecting zones and environments

There are 8 zones and 3 environments to choose from.

VEHICLE SELECTION

The vehicles are loaded with missiles and machine guns. The missiles are heat seeking, but they cannot be fired continuously and their number is limited. The machine guns can be fired continuously until they overheat. The vehicle's durability is indicated by its remaining shield strength. When it reaches zero, it has been destroyed and the opponent is declared the winner.

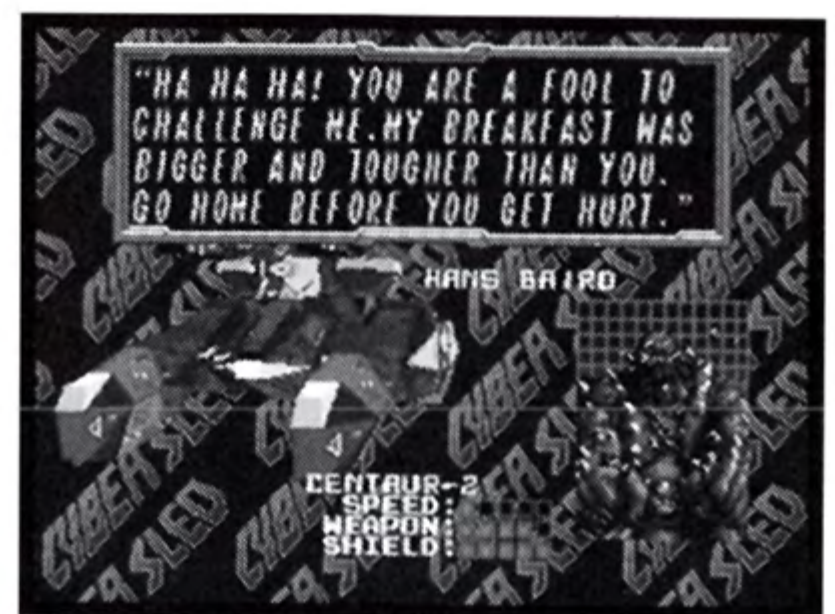
There are six vehicles available. They all have different capabilities.

Madison Hawk: Pilots the "Fireball." This vehicle handles well and has good balanced abilities.

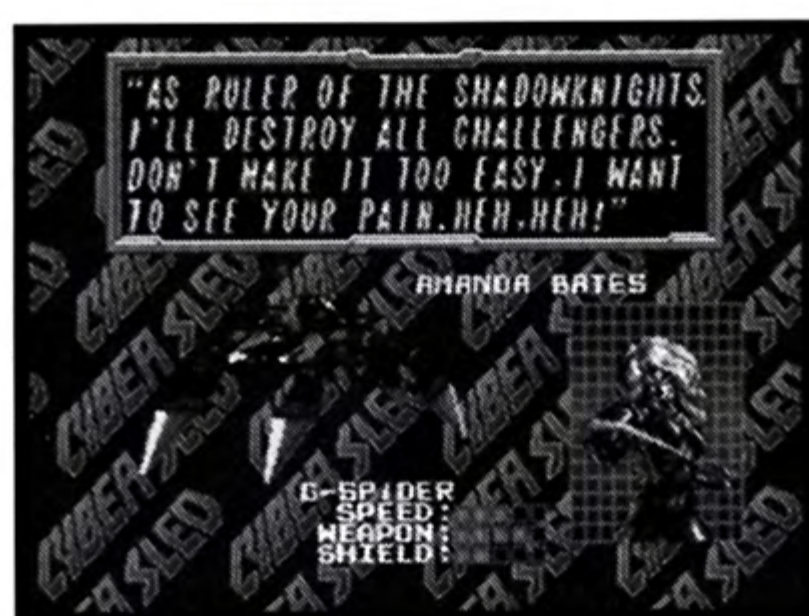


Marie Yamamoto: Pilots the "Polar Star." This vehicle has outstanding side to side movement and high top speed.

Hans Baird: Pilots the "Centaur-2." This vehicle has the lowest speed, but it is a superior defensive tank with the best armor of all.



Amanda Bates: Pilots the “G-Spider.” This Tank is very nimble and has the most powerful machine guns.



Alan Striker: Pilots the “Blue Lightning.” Its attack and defensive power is the lowest, but it has the highest top speed.

Rexer Ironside: Pilots the “Crusher.” This attack vehicle has the most powerful missiles and the heaviest load.



POWER UPS

ITEMS

Missiles - This gives you two more missiles to fire.

Shield power - This replenishes your shield.

SPECIAL ITEMS

These items appear during two-person play only. When you collect them one of the following three random effects will occur.

Radar jam - Enemy radar cannot pick up your vehicle.

Special Shield - Absorbs one missile.

Missile jam - Enemy missiles no longer track you.

LIMITED WARRANTY

Namco Hometek, Inc. warrants to the original purchaser that this Namco Hometek, Inc. game pak shall be free from defects in material and workmanship for a period of ninety (90) days from the date of purchase. If a defect covered by this limited warranty occurs during this 90-day limited warranty period, Namco Hometek, Inc. will repair or replace the defective game pak or component part, at its option, free of charge.

This limited warranty does not apply if the defects have been caused by negligence, accident, unreasonable use, modification, tampering, or any other cause not related to defective material or workmanship.

LIMITATIONS ON WARRANTY

Any applicable implied warranties of merchantability and fitness for a particular purpose, are hereby limited to ninety (90) days from the date of purchase and are subject to the conditions set forth herein. In no event shall Namco Hometek, Inc. be liable for consequential or incidental damages resulting from the possession or use of this product.

The provisions of the limited warranty are valid in the United States only. Some states do not allow limitations on how long an implied warranty lasts, or exclusion of consequential or incidental damages, so the above limitation or exclusion may not apply to you. This limited warranty provides you with specific legal rights. You may have other rights which vary from state to state.

Namco Hometek, Inc.
150 Charcot Avenue, Suite A
San Jose, CA 95131-1102



PlayStation

TM

NTSC U/C

PlayStationTM

CYBER SLED[®]



© & © 1993 1994 Namco Ltd. All rights reserved.
Manufactured pursuant to license with Namco-America, Inc.

PlayStation and the PlayStation logos are trademarks of Sony Computer Entertainment Inc.
The ratings icon is a registered trademark of the Interactive Digital Software Association.



U.S. and foreign patents pending.

SLUS-00008
00008